

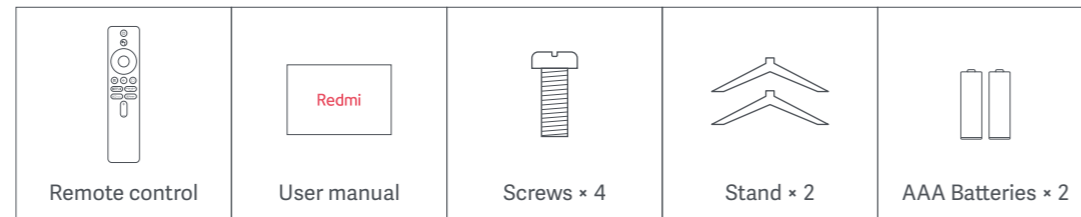


Redmi TV Safety Notice and Installation Guide

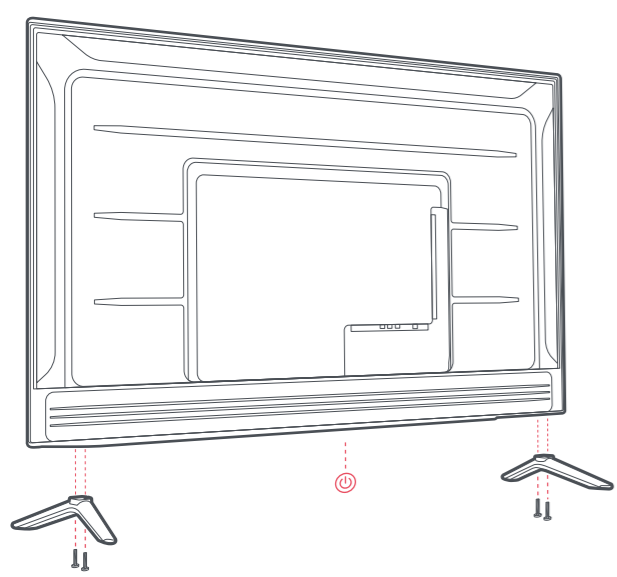
• Accessories

Note:

- Accessory Items may vary depending upon model.
- Specifications may change without prior notice. Recommended visiting website (www.mi.com) for latest updates.
- Stand pictures are for reference only.



• Installation



01 Installation (Table Top)

Insert Left/Right Stand Base to TV as shown in the picture and fasten them using screws.

- Note: 1) For Installation on wall, Kindly contact customer care for help.
2) Wall Mount Bracket is not a part of standard accessory.

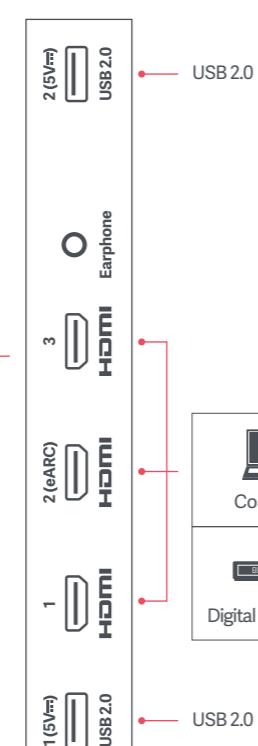
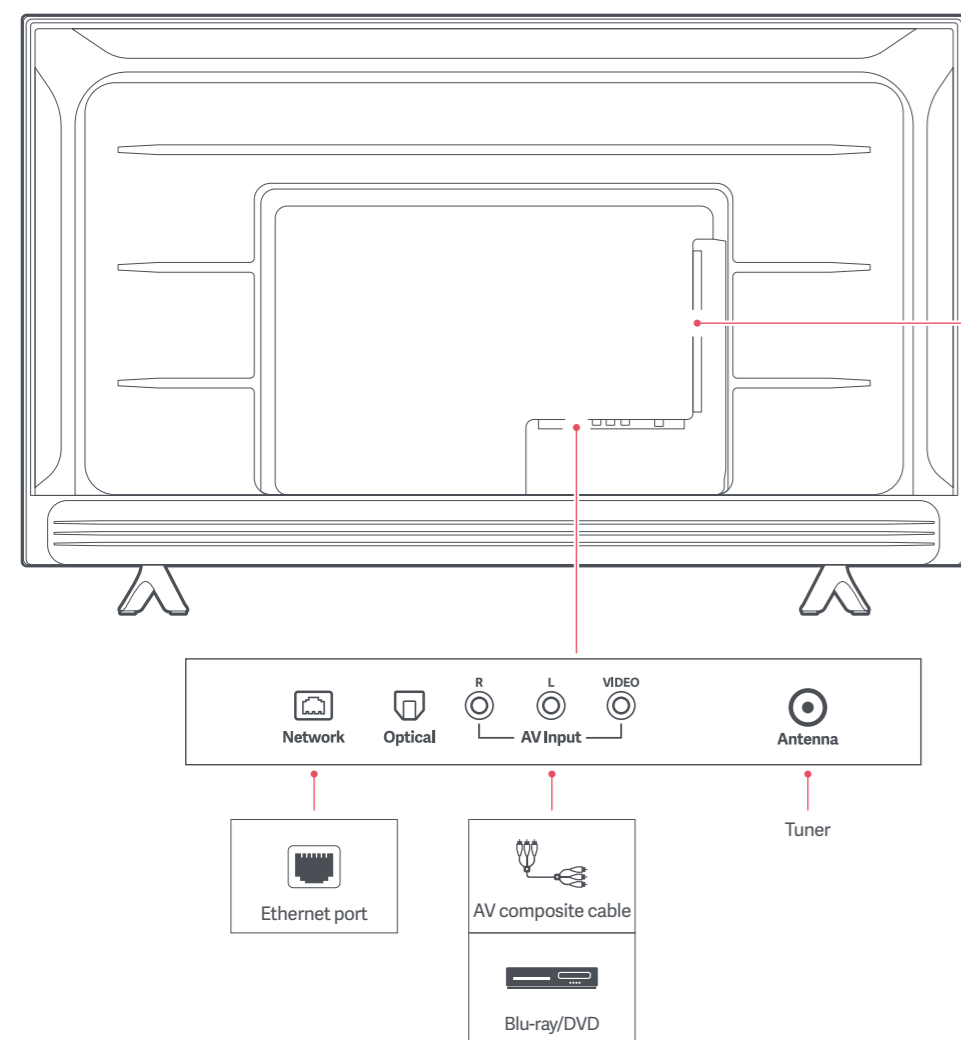
02 Turn On the TV

Connect TV's power cord to AC power outlet carefully.

Push the power button located at bottom of TV (or press power button on remote) to turn it On.

Follow screen instructions of quick start guide to setup TV.

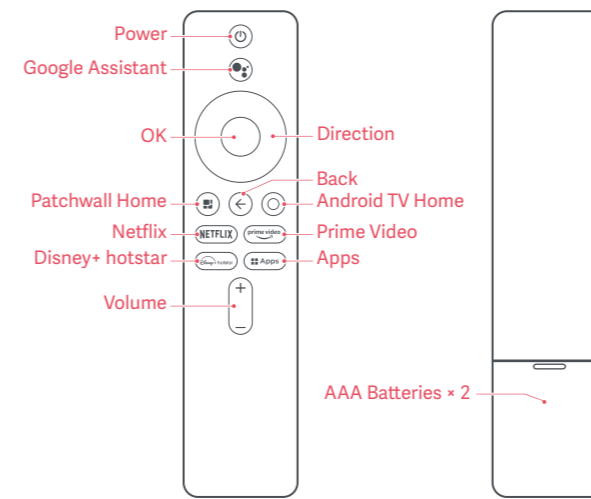
• TV interface



- This limited warranty is only valid in India, and the product is not eligible for any international warranty service. To the fullest extent permitted by law, warranty service may only be performed by Xiaomi or Xiaomi authorized service centres.
- Xiaomi may conduct diagnostic tests on customers' products to identify the causes of failures/defects. Before returning any unit for service, customer should back up data and remove any confidential and/or personal information from the product. Xiaomi is not responsible for damage or loss of any program, data, or removable storage media.
- Prior to contacting a Xiaomi service agent, please ensure the following information is at hand:
 - Model, serial number, if available.
 - Customer's full address and contact information.
 - Purchase order number, a copy of the customer's original invoice/receipt.
- This warranty does not cover the following cases:
 - If the product serial number or warranty seal is illegible or has been removed, erased, defaced, altered, and/or tampered with, if any accessory or external part of the product is missing.
 - Warranty does not cover natural wear & tear, usage under extreme conditions, damage due to improper care (accidents, misuse or negligence) and damage caused by acts of God such as floods, fires or earthquakes.
 - If any damage occurs in/on outer surface of the product, including but not limited to cracks, dents or scratches on the exterior cases, screens, buttons and other attachments.
 - General maintenance, password reset assistance, cleaning, application updates/installation, product demonstration, or any other service other than repair/replacement.
- Manufacturing warranty is applicable on:
 - Manufacturing defects in materials and workmanship of the product. This warranty applies when the product is used under normal conditions and for the purpose in which the product was designed.
- Xiaomi will determine whether a product is "Out of Warranty" at the company's discretion according to the standards listed below. Repair charges of "Out of Warranty" products shall be separately quoted by the Xiaomi service centre and respective service shall be provided upon service fee payment.
 - Violations against warranty, including but not limited to customer induced damage, such as self-repairs, exposure to water, damage caused by misuse, alteration, failure to comply with product manual, and so on.
 - Invalid warranty.
 - Expired warranty.

• Using the remote control

The image, buttons and functions of remote control may vary depending on the region, model or source.



- Power:** Short press to power On/Off TV. Long press to select more options.
- Google Assistant:** Short press and release to talk to Google Assistant.
- OK:** Press to confirm current selection during navigation. You can pause/play the current video during playback, except Live Channels (Set-Top Box or RF).
- Direction:** Navigate up/down or left/right through content. During playback use left/right buttons to rewind/fast-forward.
- PatchWall Home:** Short press to quickly return to the PatchWall Home screen. Long press to open Quick Settings Menu.
- Back:** Go back to the previous level.
- Android TV Home:** Short press to quickly return to the Android TV Home screen. Long press to open App drawer.
- Netflix:** Short press to start Netflix.
- Prime Video:** Short press to start Prime Video.
- Disney+ hotstar:** Short press to start Disney+ hotstar.
- Apps:** Short press to open App drawer.
- Volume:** Short press to adjust the volume level.
- Mute:** Double tap volume down button to mute.

• Specs

Model	Android TV Model: L43R7-7AIN Voltage: 100-240V ~ 50/60Hz Rated Power: 100W	Hardware Specs	CPU: Quad-core CA55 RAM: 2GB DDR Storage: 16GB eMMC GPU: Mali G52 MP2
Wireless Connectivity	Wi-Fi: 2.4/5GHz Bluetooth: BT5.0	Audio and Video Encoding	Audio formats: Dolby Digital Plus; DTS-HD; MP3; FLAC; AAC; OGG Video formats: Dolby Vision; MPEG 1/2; H.264; H.265; VP8; VP9; AV1;
Basic Specs	Screen size: 108cm Screen resolution: UHD (3840x2160) Refresh rate: 60Hz	Ports	Input interface: HDMI *1 (1 port with eARC support); AV *1; Antenna *1 Output interface: HDMI (eARC) *1; Earphone *1; Optical *1 Data interface: USB2.0 *2; Ethernet port *1

• Important precautions

- Installation**
- Do not let children climb the TV.
 - Place small objects out of the reach of children in order to avoid swallowing.
- Optional items**
- Keep optional accessories or any devices that emit electromagnetic radiation away from the TV in order to avoid image distortion or noise.
- In case of the following problems ...**
- The AC power cord is damaged.
 - The AC power outlet is not suitable.
 - The TV is damaged due to a drop or impact.
 - Any liquid or solid object falls into the case through an outlet. Please turn off your TV and unplug the AC power cord immediately, and please contact Xiaomi repair center for qualified service staff to check it.
- Usage restrictions**
- Do not install the TV in the following places, environments, or conditions, otherwise the TV may malfunction and cause a fire, electric shock, damage, or personal injury.
- Places:** Outdoors (in direct sunlight), by the sea, in a ship or other vessel, inside a car, in a medical institution, at an unstable location, near to water, or in a place exposed to rain, moisture, or milder. If the TV is placed in the dressing room of a public bath or spa, it may be damaged by the sulfide in the air.
 - Environment:** Hot, damp, or dusty places; places where insects may enter; places that may be exposed to mechanical shock; next to flammable objects (such as candles). The TV should not be exposed to dripping or splashing water, and do not place any items containing liquid such as flower vases on top of the TV. Do not place the TV in a damp or dusty place, or in a room with high humidity (such as a bathroom or humidifier) to avoid fire, electric shock, or deformation. Do not boil water, heat, cook noodles, or use mosquito coils near the TV.
 - Cleanliness:** Do not use the TV when your hands are wet, when the case is open, or with accessories that are not authorized by the manufacturer. In the case of a lightning storm, disconnect the TV from the AC power cord and AC outlet. Do not install the TV in an open-air location. Failure to follow these conditions may result in personal injury or damage, or cause objects to strike the TV.
 - Damage to Redmi TV screen:** Do not throw any objects toward the TV, otherwise the screen may be broken due to the impact and cause serious injury. In case of damage to the surface of the TV, do not touch the TV before the AC power cord has been unplugged, otherwise electric shock may occur.
 - Operating conditions:** Operating temperature: 0°C-45°C; Humidity: 20%-80%; Storage temperature: -15°C-40°C; Relative humidity: <80%.

Precautions

- Watch TV in appropriate lighting conditions. Watching TV in insufficient light or for long periods can damage your eyesight.
- The screen and case will get hot when the TV is working. This is normal.
- Do not support the decoding of DTS-CD bitstream coming in from HDMI IN.

Using and cleaning the screen/case of the Redmi TV

Before cleaning the LED TV, ensure that the AC power cord is disconnected from the AC power outlet. In order to avoid deterioration of the casing materials or corroding the screen coating, please observe the following precautions.

- Wipe with a soft cloth to remove any dust on the surface of the screen/case. If there is still dust, wipe with a soft cloth that has been moistened with a mild detergent.
- Do not spray water or detergent directly onto the TV. It may drip to the base of the screen or external parts, causing malfunction.
- Do not use scrub pads, alkaline/acid cleaners, scouring powder, or volatile liquids, such as alcohol, volatile oils, thinners, or insecticides. The use of the above materials or prolonged contact with rubber or vinyl products may cause damage to the screen surface and casing materials. It is recommended that you regularly clean the vents to ensure proper ventilation.
- When adjusting the angle of the TV, slowly move the TV to prevent it moving or slipping from the base.

Advertising

This TV displays advertising when it is switched on and off. The advertising that is displayed when the TV is switched on and off cannot be removed or altered, and we have no control over the content of third party advertising.

E-Waste

Xiaomi products are in conformity with the requirements of the reduction of hazardous substances of the E-Waste (Management) Amendment Rules, 2018. The content of hazardous substances with the exemption of the applications listed in SCHEDULE II of the E-waste (Management) Rules, 2018:

- Lead (Pb) - not over 0.1% by weight;
- Cadmium (Cd) - not over 0.01% by weight;
- Mercury (Hg) - not over 0.1% by weight;
- Hexavalent chromium (Cr6+) - not over 0.1% by weight;
- Polybrominated biphenyls (PBBs) - not over 0.1% by weight;
- Polybrominated diphenyl ethers (PBDEs) - not over 0.1% by weight.

For the purpose of recycling to facilitate effective utilization of resources, please return this product to a nearby authorized Collection Centre, registered dismantler or Recycler, or Xiaomi Service Centre when disposing of this product.

How to dispose this product:

- Ensure that only Authorized Recyclers repair and handle your electronic products.
- Always call Authorized E-waste Recyclers to Dispose products that have reached end-of-life.
- Always drop your used electronic products, batteries or any accessories when they reach the end of their life at your nearest Authorized E-waste Collection Center / Collection Point.
- Whenever possible or as instructed, separate the packaging material according to responsible waste disposal options and sorting for recycling.

Don'ts:

- Do not dismantle your electronic Products on your own.
- Do not throw your electronics in bins having "Do not Dispose" sign.
- Do not give e-waste to informal and unorganized sectors like Local Scrap Dealer/ Rag Pickers.

Chromecast built-in Cast your favorite entertainment apps- movies & TV shows, music, games, sports and more- from your Android or iOS device, Mac or Windows computer, or Chromecast to Roku TV, Fire Chromecast-enabled apps at googlecast.com.

Android TV For DTS patents, see <http://patents.dts.com>. Manufactured under license from DTS Licensing Limited. DTS, the Symbol, DTS and the Symbol together, are registered trademarks, and DTS is a trademark of DTS, Inc. © DTS, Inc. All Rights Reserved.

Dolby Digital For DTS patents, see <http://patents.dts.com>. Manufactured under license from DTS Licensing Limited. DTS, the Symbol, DTS and the Symbol together, are registered trademarks, and DTS is a trademark of DTS, Inc. © DTS, Inc. All Rights Reserved.

Dolby Digital Dolby, Dolby Vision, Dolby Audio, and the double-D symbol are trademarks of Dolby Laboratories Licensing Corporation. Manufactured under license from Dolby Laboratories. Confidential established works. Copyright © 1992-2021 Dolby Laboratories. All rights reserved.

Google Assistant The Redmi LED TV has the Google Assistant built in. Ask it questions, and help to do things. The more you use, the more useful it gets. It's your own personal Google, always ready to help.

HDMI The terms HDMI and HDMI High-Definition Multimedia Interface, and the HDMI logo are trademarks or registered trademarks of HDMI Licensing Administrator, Inc. in the United States and other countries.

Recycling symbol For more details, please call hotline: 1800 103 6286. Official Website: www.mi.com/Service Service Email Address: service@xiaomi.com

• Redmi TV WARRANTY POLICY

Redmi TV Warranty Terms & Condition:

Product	Category	Warranty coverage	Period
TV	Product	TV / Remote	1 year
TV	Parts	Main Board, Power Board, IR PCB, LVDS Cable, Speaker	1 year
TV	Panel	Extended warranty for panel	1+1 year

- The Limited Warranty starts from the date of purchase.** During the warranty period, if any accessory defect is inspected and confirmed by a Xiaomi authorized service center, a free replacement service shall be provided.
- This limited warranty is only valid in India, and the product is not eligible for any international warranty service. To the fullest extent permitted by law, warranty service may only be performed by Xiaomi or Xiaomi authorized service centres.
 - Xiaomi may conduct diagnostic tests on customers' products to identify the causes of failures/defects. Before returning any unit for service, customer should back up data and remove any confidential and/or personal information from the product. Xiaomi is not responsible for damage or loss of any program, data, or removable storage media.
 - Prior to contacting a Xiaomi service agent, please ensure the following information is at hand:
 - Model, serial number, if available.
 - Customer's full address and contact information.
 - Purchase order number, a copy of the customer's original invoice/receipt.
 - This warranty does not cover the following cases:
 - If the product serial number or warranty seal is illegible or has been removed, erased, defaced, altered, and/or tampered with, if any accessory or external part of the product is missing.
 - Warranty does not cover natural wear & tear, usage under extreme conditions, damage due to improper care (accidents, misuse or negligence) and damage caused by acts of God such as floods, fires or earthquakes.
 - If any damage occurs in/on outer surface of the product, including but not limited to cracks, dents or scratches on the exterior cases, screens, buttons and other attachments.
 - General maintenance, password reset assistance, cleaning, application updates/installation, product demonstration, or any other service other than repair/replacement.
 - Manufacturing warranty is applicable on:
 - Manufacturing defects in materials and workmanship of the product. This warranty applies when the product is used under normal conditions and for the purpose in which the product was designed.
 - Xiaomi will determine whether a product is "Out of Warranty" at the company's discretion according to the standards listed below. Repair charges of "Out of Warranty" products shall be separately quoted by the Xiaomi service centre and respective service shall be provided upon service fee payment.
 - Violations against warranty, including but not limited to customer induced damage, such as self-repairs, exposure to water, damage caused by misuse, alteration, failure to comply with product manual, and so on.
 - Invalid warranty.
 - Expired warranty.



WARRANTY CARD

Dear Customer,

Thank you for buying this Redmi TV. This card entitles you to avail 1 year warranty on the product (LED TV) and 1+1 year extended warranty on display panel.

Customer Information

Product Name: _____

Model No. : _____

Sr. No. : _____

Customer Name: _____

Address: _____

Contact No. : _____

Email ID: _____

Date of purchase: _____

Invoice No. : _____

Dealer Name & Address: _____

Customer Care Help Line: Xiaomi Technology India Pvt. Ltd.,
Phone No. 1800 1036286,
Email: service@xiaomi.com